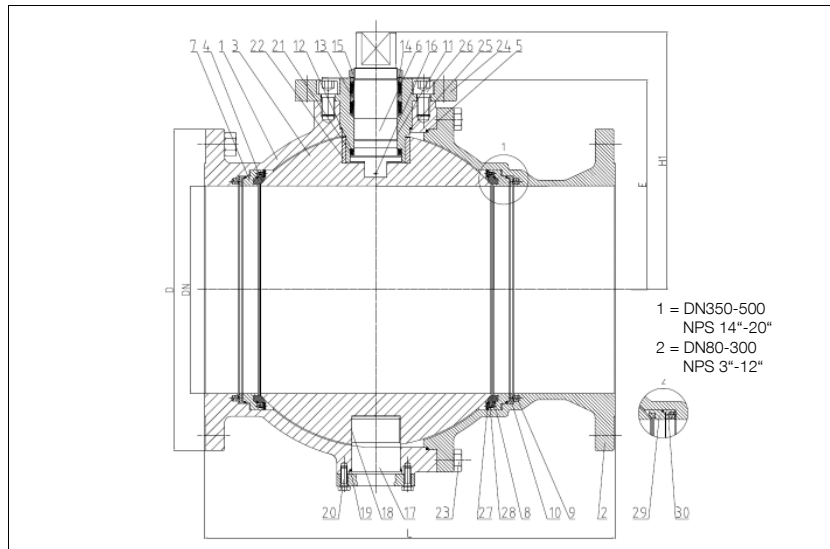


BALL VALVES INTEC

K210, DN300 - DN500, PN16/40
trunnion mounted ball, soft seated,
both sides spring loaded seat rings



Flanged ball valve
full bore
face to face acc. to EN 558, GR.27
flanges acc. to EN 1092

Specification:

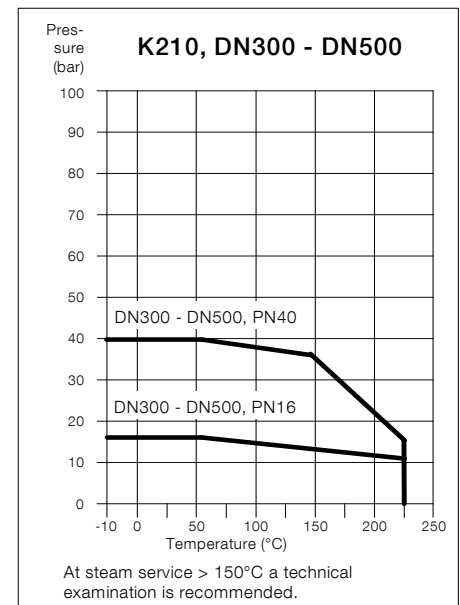
Two-piece ball valve with flanges acc. to EN 1092, face to face dimensions acc. to EN 558, GR.27, full bore, blow-out-proof stem, body material stainless steel (1.4408) or carbon steel (1.0619), antistatic device, free of non ferrous metals, trunnion mounted ball, seats full chambered, stem packing Graphite/KFGN/KFAM cone ring system dynamic loaded adjustable, top flange DIN EN ISO 5211, approved by PED, certified acc. to GERMAN clean air act VDI 2440, Fire-Safe acc. to API 607 and DIN EN ISO 10497.

Marking: INTEC K210

No.	Part	Material	Material
Standard design			
1	body	1.0619	1.4408
2	cap	1.0619	1.4408
3	ball		1.4408
4	seat		KFM
5	body seal		KF
6	stem		1.4462
7	seat bearing ring		1.4571/1.4404
8	seat seal		KF
9	spiral spring		1.4401
10	follower ring		1.4571/1.4404
11	stem bearing		1.4401/KF
12	below seal		KFGN/Graphite
13	upper seal		KFAM/Graphite
14	bearing		PEEK
15	hex. nut self-locking		A2/1.4301
16	antistatic element		1.4401/1.4571/1.4404
17	trunnion		1.4571/1.4404
18	bearing		1.4401/KF
19	trunnion seal		KF
20	hex. screw		A4-70
21	friction washer		PEEK
22	ball bearing		PEEK
23	hex. screw		A4-70
24	stuffing box		1.4571/1.4404
25	stuffing box seal		KF
26	allen screw		A4-70
27	stop plate		1.4571/1.4404
28	countersunk screw		A4-70
29	seat bearing ring		1.4571/1.4404
30	spring washer		1.4571/1.4404
Fire-Safe design			
5	combined body seal		KF-Graphite
8	seat seal		Graphite
9	spiral spring		Inconel X750
11	Fire-Safe seal		Graphite
	ring		1.4571/1.4404
	thrust washer		PEEK
19	trunnion seal		Graphite
25	stuffing box seal		KF-Graphite

Dimensions

DN mm	PN	dimensions (mm)				top flange ISO	torque Nm *	weight kg
		L	D	E	H1			
300	16	500	460	311	400	F16	1364**	343
300	40	500	515	311	400	F16/F25	3239**	380
350	16	550	520	350	439	F25	1970**	505
350	40	550	580	350	439	F25	4613**	615
400	16	762	580	388.5	477.5	F25-F30	2540**	692
400	40	762	660	388.5	477.5	F25-F30	5950**	772
500	16	914	715	485	589	F25-F30	4890**	1363
500	40	914	755	485	589	F30/F35	11600**	1438



Ordering example:
INTEC K210, DN400, PN40,
GR. 27, 1.4408, Fire-Safe

* Necessary torque measured with treated water at Δ P acc. to pressure class and room temperature.

** gearbox recommended

Other flange connections and materials on request.

Subject to technical modification. 08/2018